

WHAT TO DO IF YOU FIND *injured wildlife*



STAY SAFE

- Approach only if safe to do so.
- Injured animals may bite or scratch.
- Use hazard lights and be cautious when stopping on a road side.
- Only move animals off the road if it is safe to do so.

CALL FOR HELP

- Wildlife Rescue South Coast:
0418 427 214
- WIRES: 1300 094 737
- Your Local Vet
- IFAW Wildlife Rescue App

CONTAINING BIRDS & SMALL ANIMALS

- If safe to do so, use a towel or cloth to cover and calm them.
- Place in a ventilated box with a towel.
- Keep in a quiet, dark, warm place.

RECORD DETAILS

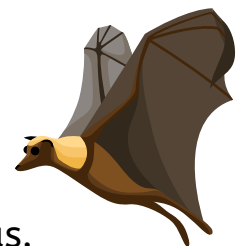
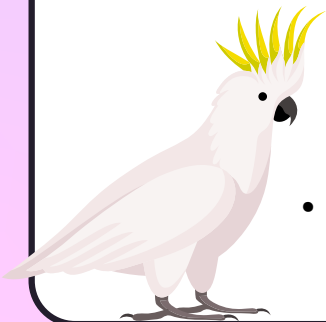
- Location (GPS if possible)
- Species of animal
- Visible injuries
- Date and time found
- Mark the spot if you need to leave (e.g. flag, shirt, note)

CHECK POUCH

- If it is safe to do so look inside the pouch of deceased kangaroos, wallabies, wombats, etc.
- If a live joey is present call WRSC or WIRES.
- Do not remove young (especially pinkies) which are fused to the teat.
- If advised, be sure to use gloves/cloth to gently remove the young from the pouch.
- Wrap in a towel or cloth to keep warm until a wildlife rescue member comes to pick it up.

PLEASE REMEMBER

- Do not feed or offer water to the animal.
- Do not treat or medicate the animal yourself.
- Do not transport large/dangerous animals.
- Do not handle bats, flying foxes, snakes or koalas.
- Do not keep wildlife, it's illegal.



For more information please visit : <https://purpletreepets.com.au/wildlife-rescue-in-nsw-australia/>



Purple Tree Pets